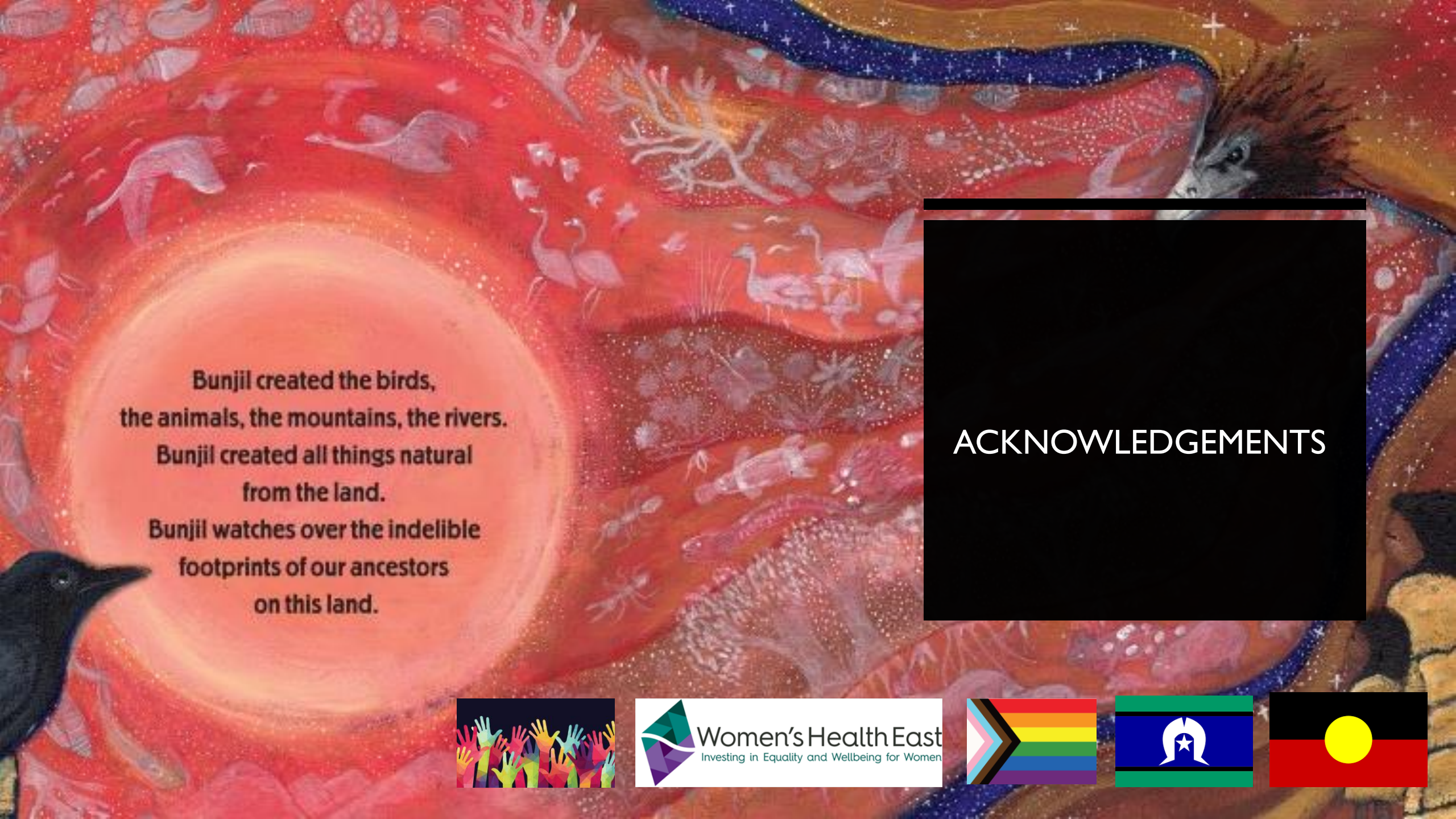


PROMOTING GENDER EQUALITY AT KINDERGARTEN AND PRIMARY SCHOOL.

AIMY MCANINLY- *RESPECTFUL RELATIONSHIPS LEAD*, DEPARTMENT OF EDUCATION

KAVITA PARMAR- *TEACHER & WELLBEING COORDINATOR*, BIRRALEE PRIMARY SCHOOL, DONCASTER



Bunjil created the birds,
the animals, the mountains, the rivers.
Bunjil created all things natural
from the land.
Bunjil watches over the indelible
footprints of our ancestors
on this land.

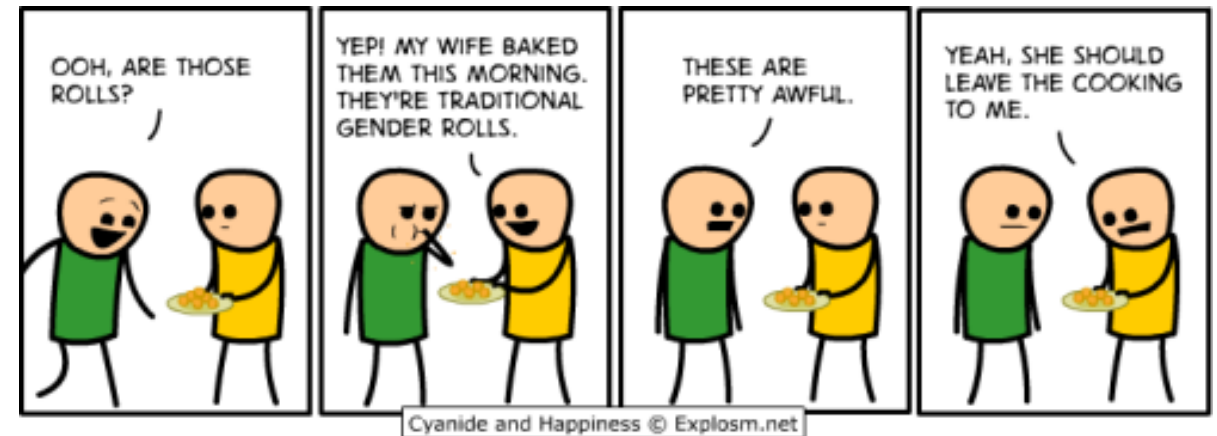
ACKNOWLEDGEMENTS



WHAT IS RESPECTFUL RELATIONSHIPS?



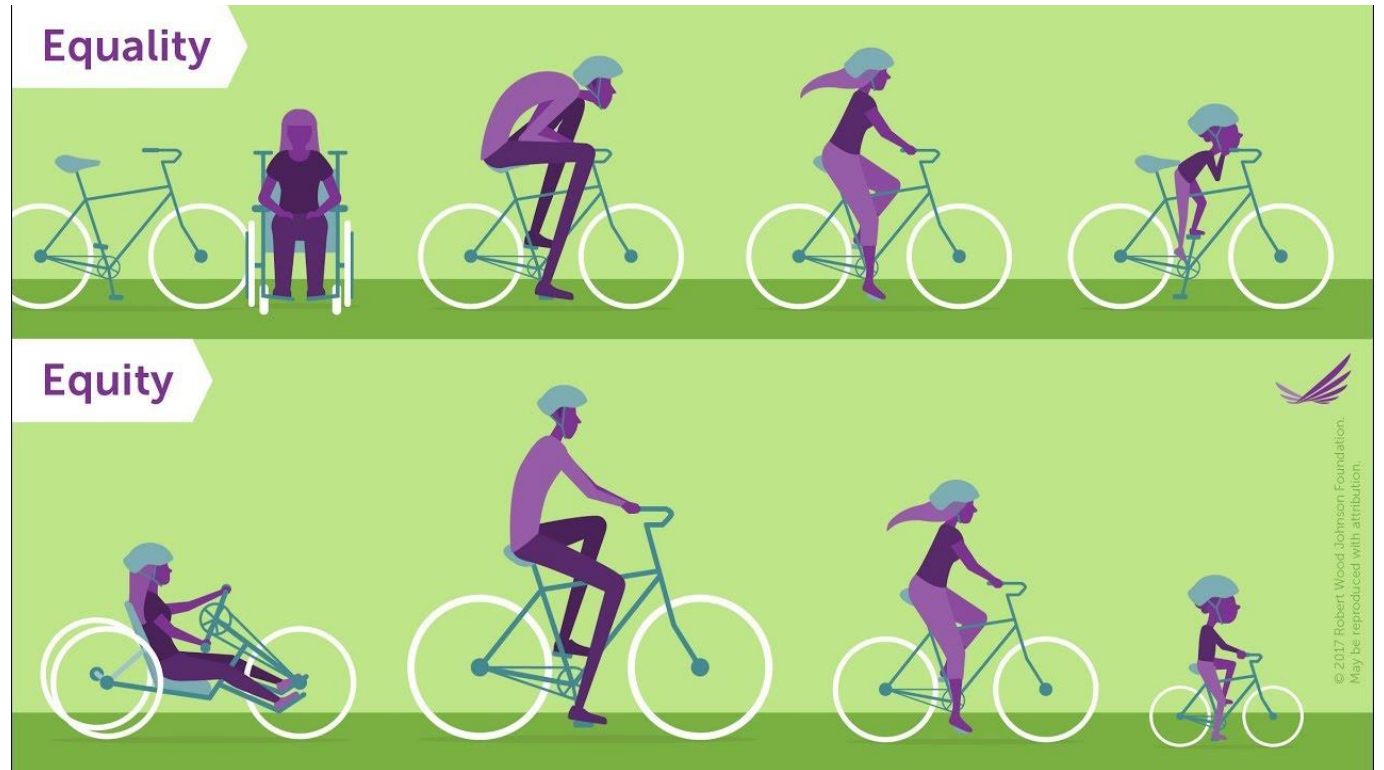
- Released in March 2016- A Royal Commission into Family Violence.
- As a Long term strategy.
- Whole of government approach



- Whilst the causes of family violence are complex, evidence shows that stereotyped views of gender (femininity and masculinity) are one of the key drivers.
- Schools play a central role in the intellectual, social and emotional development of children and young people.

WHY?

- Why does it matter?
- Gender-based violence is preventable



IMPLEMENTING IN EARLY YEARS

- Understanding and developing respectful relationships in early childhood
- Supporting children to manage stress and emotions
- Inclusive learning environments in early childhood

Each setting will implement the understandings differently.

Approached through a questioning, curiosity lens. With a play-based modeling and game based approach.

WHAT DOES IT LOOK LIKE IN EARLY YEARS SETTINGS?

Communication to parents

- Displays
- Questions at pickup and drop off
- Photos through communication apps
- Newsletters



LABELS ARE FOR JARS. NOT PEOPLE.

IMPLEMENTING IN SCHOOLS

- Together health and physical education and personal and social capabilities develops knowledge and skills to promote respectful relationships that are safe and equitable.

Each School will implement the curriculum differently.

Approached through more direct lesson sequences, questioning, scenario and game-based approach.

WHAT DOES IT LOOK LIKE IN SCHOOLS?

Communication to parents

- Assemblies
- Newsletters
- Displays
- Information and parent info nights

Leadership

- Supporting families and carers to understand
- Welcoming parent questions and feedback
- Supporting implementation of a whole school approach
- Supporting teachers to implement in their classrooms

EARLY YEARS FRAMEWORK

- Fostering inclusion
- Links in with each of the outcomes:

OUTCOME 1: CHILDREN HAVE A STRONG SENSE OF IDENTITY

OUTCOME 2: CHILDREN ARE CONNECTED WITH AND CONTRIBUTE TO THEIR WORLD

OUTCOME 3: CHILDREN HAVE A STRONG SENSE OF WELLBEING

OUTCOME 4: CHILDREN ARE CONFIDENT AND INVOLVED LEARNERS

OUTCOME 5: CHILDREN ARE EFFECTIVE COMMUNICATORS

- encouraging equal and respectful relationships
- helping children to achieve and aspire
- support children to grow into adults who aren't limited by expectations based on their sex
- provide children with environments that encourage nongendered norms and expectations, children can feel more accepted and celebrated for their individuality

choice



WHAT DOES IT LOOK LIKE IN SCHOOLS?

- Our School Motto: Achieving excellence **together**
- Our School Declaration:

***At Birralee we learn to live and work together,
To be responsible and to think of others,
To respect our community and care for the environment,
And strive to achieve our goals.***



WHAT WE DO IN THE CLASSROOM AT BIRRALEE PRIMARY SCHOOL?

- Choice
- Language
- Fairness
- Equal access
- Equal expectations





OUR CURRICULUM

- We use a combined approach of teaching the Respectful Relationships and Play Is The Way programs in our Wellbeing Curriculum.
- A few topics we teach from Prep to Grade 2 include:
 - Gender and Identity
 - Exploring Gender
 - Positive Gender Relations



PREP

Curriculum Breakdown

- Individuality
- Fair and friendly play
- Difference between fair and violent play
- What gender-based violence looks like
- Why we wear clothes



GRADE 1

Curriculum Breakdown

- Comparing personal preferences
- Highlighting that genders don't make a difference when working together
- Revisit fair and friendly play and look at conflict resolution
- Gender friendly classrooms



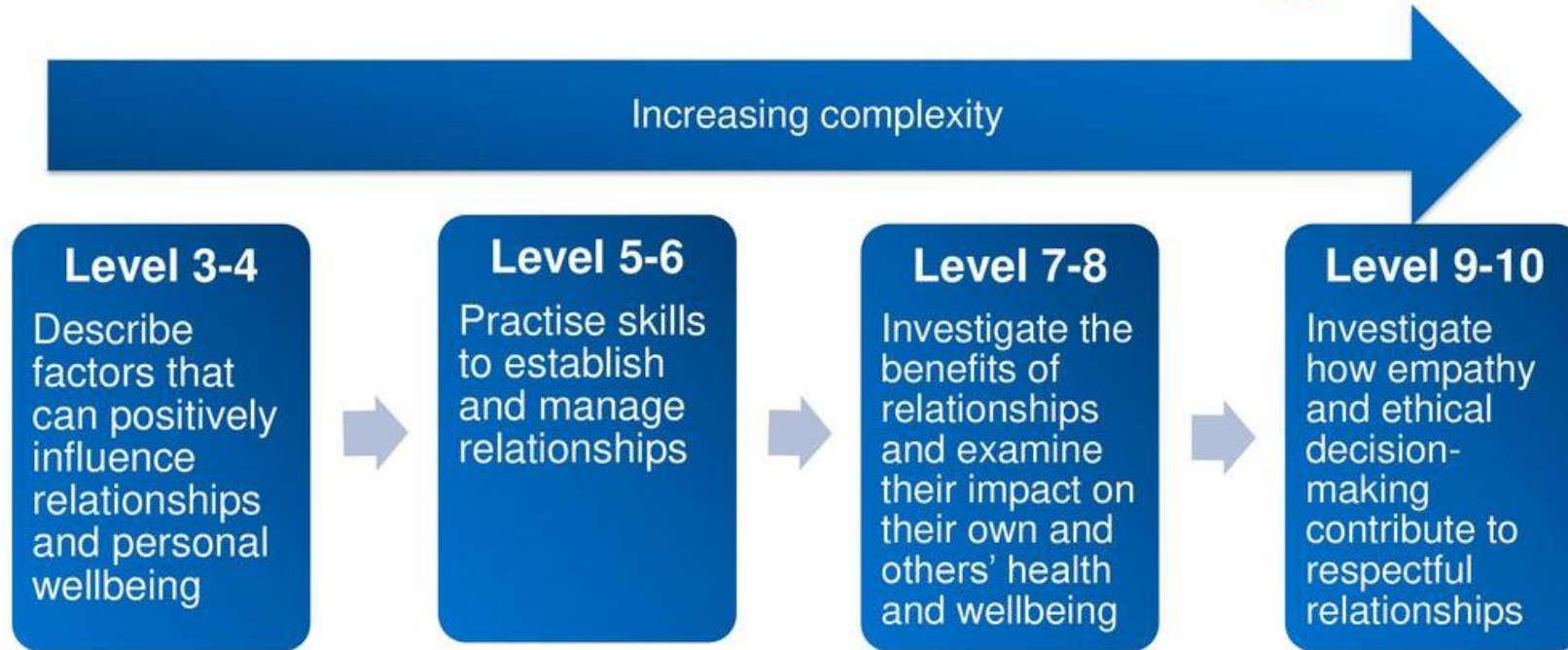
GRADE 2

Curriculum Breakdown

- Inclusive gender stories
- Witnessing gender based violence and resolving conflicts
- Supporting each other
- Personal boundaries
- Help-seeking



Continuum of learning



SUPPORTING RESPECTFUL RELATIONSHIPS AT HOME



1. Create a **safe space** where children are free to be themselves.
2. Challenge stereotypes when you hear them.
3. Talk about stereotypes.
4. Provide a range of **role models** through topic work, images in the classroom and external visitors.
5. Make the most of **books** that challenge stereotyped ideas.
6. Look at who uses which spaces and equipment to ensure all children have access.
7. Make sure there aren't 'girl jobs' and 'boy jobs' such as admin tasks or lifting heavy equipment.
8. Pick ways to group children that don't rely on gender.
9. Use **inclusive language** rather than gendered terms of endearment or constantly referring to boys and girls.
10. Think about **rewards and sanctions** to ensure all children are treated equally and rewards don't rely on gender stereotypes.

ENROLLING IN EARLY YEARS EDUCATION

- Research shows that kindergarten improves children's health and wellbeing, helps them to develop strong social skills and encourages a love of learning.
- Children who go to a kindergarten program are more independent and confident and are more likely to make a smooth transition to primary school (Prep)
- To find a kindergarten program in your local area (or area of choice) visit www.education.vic.gov.au/findaservice/Home.aspx or contact your local council, which you can find by visiting www.dtpli.vic.gov.au.
- Check with your council or the kindergarten on how to enrol.
- The Victorian Government subsidises fees for some children so they can attend kindergarten for free or at low cost in the year before they start primary school, usually when they are four years old.



RESOURCES

- Women's Health East: No Limitations Guide
- https://whe.org.au/custom_type/no-limitations-guide/
- Respectful Relationships (including Myths and Facts)
- <https://www.education.vic.gov.au/about/programs/Pages/respectfulrelationships.aspx>

You are allowed to leave your home to escape family violence during Stage 4 restrictions.

Even with Stage 4 restrictions across Melbourne, you CAN leave your home at any time to seek safety from domestic and family violence.

If you need help or support, we're here for you 24/7.



Call safe steps 1800 015 188 any time of the day or night.

1800RESPECT

NATIONAL SEXUAL ASSAULT, DOMESTIC
FAMILY VIOLENCE COUNSELLING SERVICE

1800 737 732

1800respect.org.au